

MODEL 50/55/60 SERIES MINIATURE FLOW MONITOR SWITCH

OPERATION

THE OPERATING PRINCIPLE IS BASED ON A FREE FLOATING CALIBRATED MAGNETIC PISTON, WHICH RESPONDS ONLY TO THE MOTION OF FLUIDS (LIQUID OR GAS) WITHIN THE LINE -- NOT TO STATIC OR SYSTEM PRESSURES. IN THE PRESENCE OF FLOW, CONTROLLED MOVEMENT OF THE PISTON ACTUATES AN EXTERNAL REED SWITCH PRODUCING THE REQUIRED SIGNAL.

INSTALLATION

*MOUNT VERTICALLY WITH LEAD WIRES DOWN FOR NORMALLY CLOSED OPERATION.
MOUNT WITH LEAD WIRES UP FOR NORMALLY OPEN OPERATION.
DOUBLE SWITCH MODELS MAY BE MOUNTED EITHER WAY.*

ELECTRICAL DATA

SINGLE POLE SINGLE THROW:

CONTACT ARRANGEMENT	S.P.S.T.
MAX SWITCHING VOLTAGE	200 V.D.C.
D.C. RESISTIVE	10 WATTS
A.C. RESISTIVE	10 V.A.
SWITCHING CURRENT	0.5 AMPS
LAMP	DERATE BY 2/3

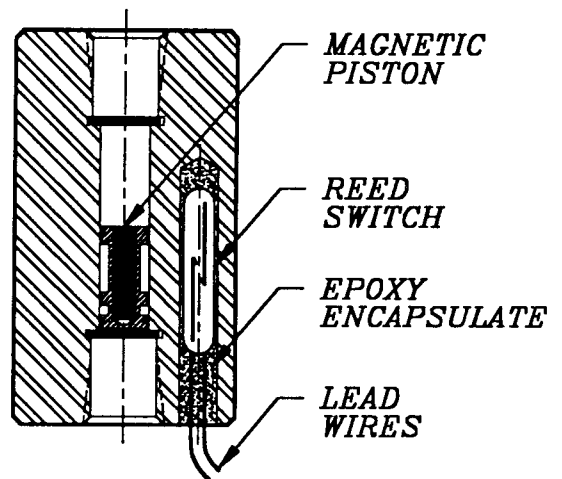
SINGLE POLE DOUBLE THROW:

CONTACT ARRANGEMENT	S.P.D.T.
MAX SWITCHING VOLTAGE	100 V.D.C.
SWITCHING CURRENT	0.3 AMPS
D.C. CONTACT RATING	3 WATTS

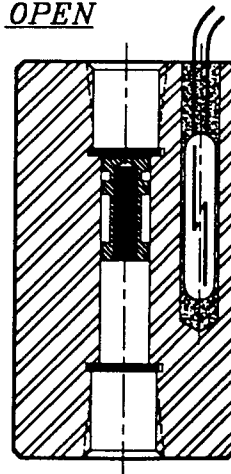
COLOR CODE

ORANGE	NORMALLY OPEN
YELLOW	NORMALLY CLOSED
GREEN	COMMON

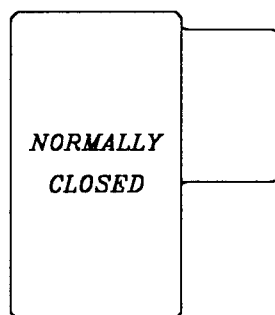
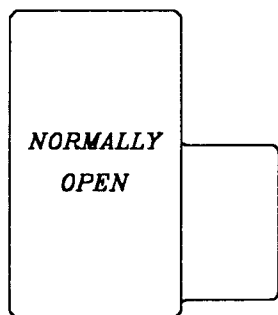
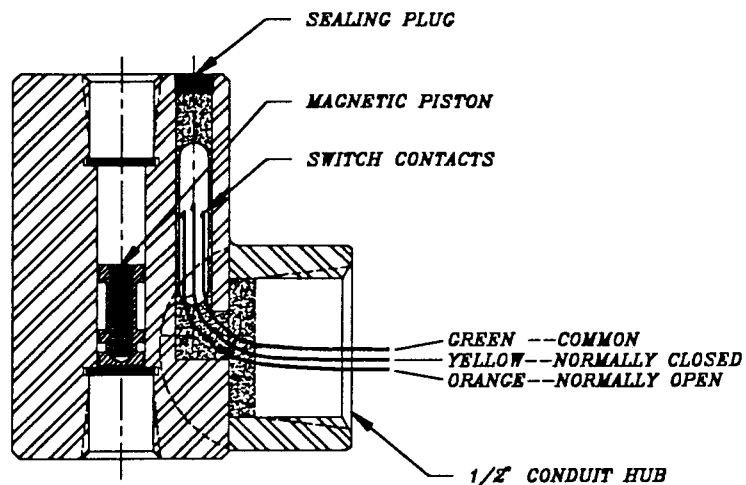
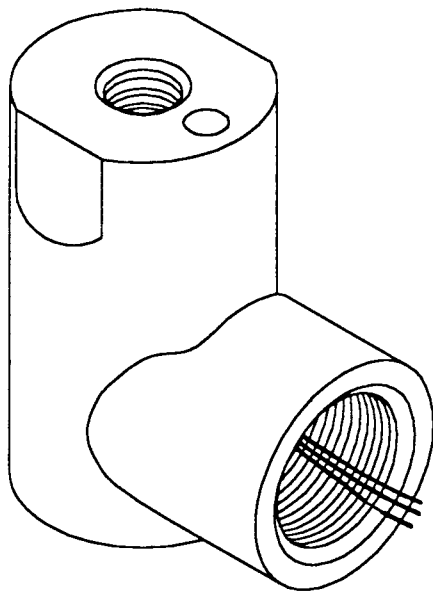
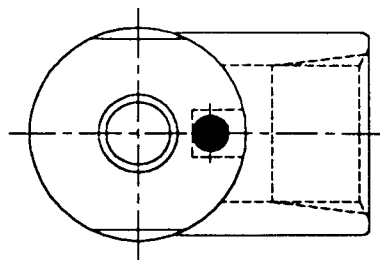
NORMALLY
CLOSED



NORMALLY
OPEN



M-50/55/60 SERIES
FLOW SWITCHES
EXPLOSION-PROOF



ORIENTATION

The same configuration is used for both normally open and normally closed operations. The switch is mounted with the conduit hub down for normally open operations, and with the conduit hub up for normally closed operations. The flow setting indicated on the switch label is for switch actuation in the configuration indicated.

CLEAN-OUT

PROCEDURE TO CLEAN FLOW SWITCH

1. REMOVE RETAINING RING WITH PLIERS
2. REMOVE PISTON BY INVERTING
3. CLEAN BORE FIRST WITH TRICHLOROTHENE THEN WITH COMPRESSED AIR
4. REPLACE PISTON IN SAME ORIENTATION AS BEFORE
5. REPLACE RETAINING RING USING PLIERS

